



同田生物
TAUTO BIOTECH

地址：上海市张江高科技园区爱迪生路326号 邮编：201203

销售热线：400-820-3059

86-21-51320588-8008/8035/8026/8025

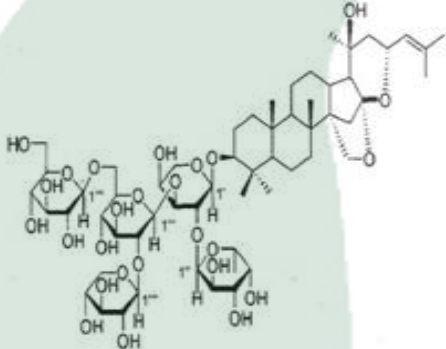
传真：86-21-51320502

QQ:800015916

MSN:Tauto_shanghai@hotmail.com

URL: www.tautobiotech.com

Mail: sales2@tautobiotech.com export2@tautobiotech.com

PRODUCT ID	E-0864	<p style="text-align: center;">Structure</p> 
PRODUCT	Jujuboside A1/酸枣仁皂苷 A1	
STANDARD TYPE	Quantitative Reference Material (含量测定)	
LOT NUMBER	15051822	
ASSAY METHOD	HPLC,MS,NMR	
DATE OF SAMPLE	2015-05-18	
DATE OF REPORT	2015-05-18	

CHEMICAL NAME

OTHER NAME

Jujuboside A1

CHEMICAL FORMULA

C58H94O26

MOLECULAR WEIGHT(MW)

1207.35

CAS NUMBER

194851-84-8

CHEMICAL FAMILY

FROM

鼠李科植物酸枣 *Ziziphus psinosa* Hu 的干燥成熟种子

ANALYTICAL RESULT

TEST	METHOD	SPECIFICATION	RESULT
HPLC	Q/TFFK234—2007	NLT ≥98.0%	Conforms
NMR		Conforms	Conforms
MS		Conforms	Conforms
Residual Solvent	Q/TFFK234—2007	NA	ND
Water	Q/TFFK234—2007	≤2%	Conforms
Appearance		Pale White Powder	Conforms

STORAGE CONDITIONS

STORAGE

Refer to the label

SHELF LIFE

2 Years

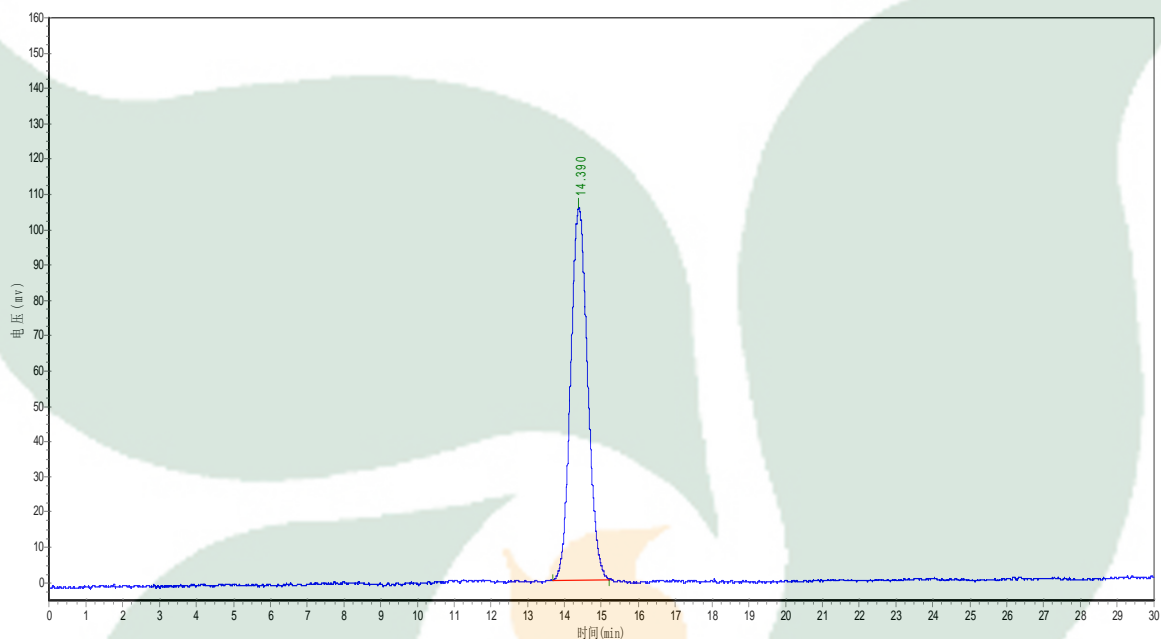
Analyst

Checker

Manager

Product Analysis Report

Product Name: Jujuboside A1 Chrom-Column: Kromasil C18
Lot Number: 15051822 Mobile Phase: MeOH: H₂O (65: 35)
Detect Time: 2015-5-18 Detector: ELSD
Inject Vol: 20 μ L Tube Temp: 110°C
Flow: 1.0ml/min Gas Flow: 2.9 L/min
Analyst: zhufangfang Impactor: Off



No.	Ret.Time min	Height mAU	Area mAU*min	Rel.Area %
1	14.390	106208.266	3474093.250	100.0000