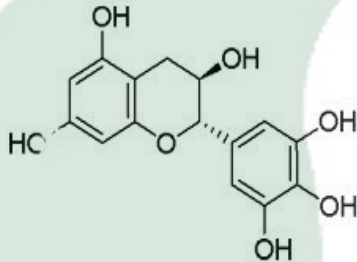


<b>PRODUCT ID</b>	E-0652	<b>Structure</b> 
<b>PRODUCT</b>	Gallocatechin /没食子儿茶素	
<b>STANDARD TYPE</b>	Quantitative Reference Material (含量测定)	
<b>LOT NUMBER</b>	16101331	
<b>ASSAY METHOD</b>	HPLC,NMR	
<b>DATE OF SAMPLE</b>	2016-10-13	
<b>DATE OF REPORT</b>	2016-10-13	

<b>CHEMICAL NAME</b>	(2S,3R)-2-(3,4,5-Trihydroxyphenyl)-3,4-dihydro-1(2H)-benzopyran-3,5,7-triol
<b>OTHER NAME</b>	(2S,3R)-2-(3,4,5-trihydroxyphenyl)chroman-3,5,7-triol
<b>CHEMICAL FORMULA</b>	C <sub>15</sub> H <sub>14</sub> O <sub>7</sub>
<b>MOLECULAR WEIGHT(MW)</b>	306.27
<b>CAS NUMBER</b>	3371-27-5
<b>CHEMICAL FAMILY</b>	Flavonoids 黄酮类
<b>FROM</b>	Green Tea

**ANALYTICAL RESULT**

TEST	METHOD	SPECIFICATION	RESULT
HPLC	Q/TFFK680—2006	NLT ≥98.0%	Conforms
NMR		Conforms	Conforms
MS		Conforms	Conforms
<b>Residual Solvent</b>	Q/TFFK680—2006	NA	ND
<b>Water</b>	Q/TFFK680—2006	≤2%	Conforms
<b>Appearance</b>		White Powder	Conforms

**STORAGE CONDITIONS**

STORAGE	Refer to the label
SHELF LIFE	2 Years

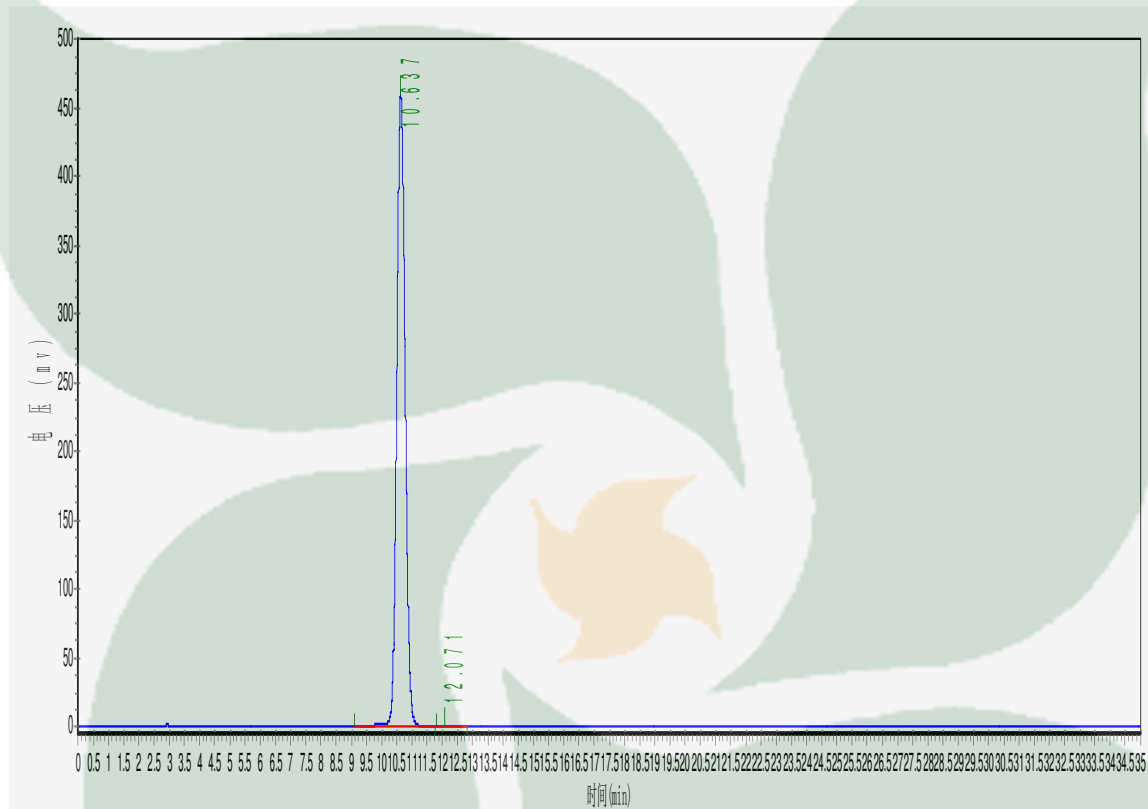
Analyst

Checker

Manager

# Product Analysis Report

Product Name: GC Chrom-Column: C18  
Lot Number: 16101331 Mobile Phase: ACN:0.1%H3PO4=8::92  
Temperature: 25°C Wavelength: 238nm  
Detect Time: 2016-10-13 Inject Vol: 20.0 µL  
Analyst: shuzhilin Flow: 1.00 ml/min



No.	Ret.Time min	Height mAU	Area mAU*min	Rel.Area %
1	10.637	459624.125	8716160.000	99.9489
2	12.071	205.613	4455.200	0.0511