



**同田生物**  
**TAUTO BIOTECH**

地址：上海市张江高科技园区爱迪生路326号 邮编：201203

销售热线：400-820-3059

86-21-51320588-8008/8035/8026/8025

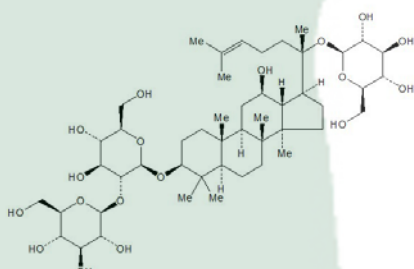
传真：86-21-51320502

QQ:800015916

MSN:Tauto\_shanghai@hotmail.com

URL: www.tautobiotech.com

Mail: sales2@tautobiotech.com export2@tautobiotech.com

<b>PRODUCT ID</b>	E-0178	<b>Structure</b> 
<b>PRODUCT</b>	Ginsenoside-Rd / 人参皂苷Rd	
<b>STANDARD TYPE</b>	Quantitative Reference Material (含量测定)	
<b>LOT NUMBER</b>	17060922	
<b>ASSAY METHOD</b>	HPLC,MS,NMR	
<b>DATE OF SAMPLE</b>	2017-06-09	
<b>DATE OF REPORT</b>	2017-06-09	

**OTHER NAME** Panaxoside Rd

**CHEMICAL FORMULA** C48H82O18

**MOLECULAR WEIGHT(MW)** 947.15388

**CAS NUMBER** 52705-93-8

**CHEMICAL FAMILY** Triterpenes 三萜类

**FROM** Panax ginseng C.A.Mey

**ANALYTICAL RESULT**

TEST	METHOD	SPECIFICATION	RESULT
HPLC	Q/TFFK184—2007	NLT ≥97.0%	Conforms
NMR		Conforms	Conforms
MS		Conforms	Conforms
<b>Residual Solvent</b>	Q/TFFK184—2007	NA	ND
<b>Water</b>	Q/TFFK184—2007	≤2%	Conforms
<b>Appearance</b>		White Crystal	Conforms

**STORAGE CONDITIONS**

STORAGE Refer to the label

SHELF LIFE 2 Years

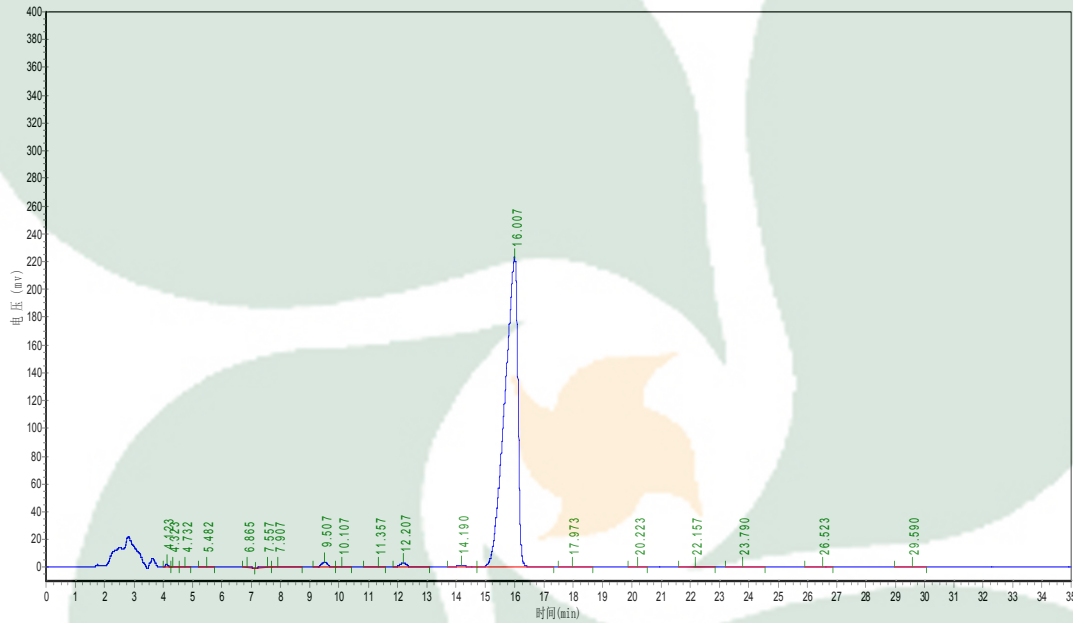
Analyst

Checker

Manager

# Product Analysis Report

Product Name: Ginsenoside Rd    Chrom-Column: C18  
Lot Number: 17060922    Mobile Phase: ACN: 0.1%H3PO4=35:65  
Temperature: 25°C    Wavelength: 203nm  
Detect Time: 2017-06-09    Inject Vol: 20µL  
Analyst: zhanghong    Flow: 1ml/min



No.	Ret.Time min	Height mAU	Area mAU*min	Rel.Area %
1	4.123	1692.846	11703.069	0.1644
2	4.323	314.200	2141.431	0.0301
3	4.732	168.755	1466.850	0.0206
4	5.482	190.000	2030.200	0.0285
5	6.865	105.923	1109.500	0.0156
6	7.557	339.349	5808.803	0.0816
7	7.907	352.683	10775.896	0.1514
8	9.507	3911.195	55875.496	0.7849
9	10.107	308.065	4308.239	0.0605
10	11.357	287.636	3767.000	0.0529
11	12.207	2955.135	50325.699	0.7069
12	14.190	1464.708	30834.236	0.4331
13	16.007	223037.641	6917903.500	97.1720
14	17.973	163.041	5120.700	0.0719
15	20.223	27.550	575.900	0.0081

16	22.157	406.368	11051.800	0.1552
17	23.790	86.927	2861.300	0.0402
18	26.523	21.793	564.100	0.0079
19	29.590	28.750	1013.200	0.0142
20	38.923	36.128	1270.600	0.0178

