



同田生物
TAUTO BIOTECH

地址：上海市张江高科技园区爱迪生路326号 邮编：201203

销售热线：400-820-3059

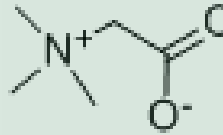
86-21-51320588-8008/8035/8026/8025

传真：86-21-51320502

QQ:800015916

URL: www.tautobiotech.com

Mail: sales2@tautobiotech.com export2@tautobiotech.com

PRODUCT ID	E-0594	Structure 
PRODUCT	Betaine /甜菜碱	
STANDARD TYPE	Quantitative Reference Standard/ 含量测定	
LOT NUMBER	17061422	
ASSAY METHOD	HPLC,MS,NMR	
DATE OF SAMPLE	2017-06-14	
DATE OF REPORT	2017-06-14	

OTHER NAME

CHEMICAL FORMULA C₅H₁₁NO₂

MOLECULAR WEIGHT(MW) 117.15

CAS NUMBER 107-43-7

CHEMICAL FAMILY

FROM Evolvulus alsinoides L.全草

ANALYTICAL RESULT

TEST	METHOD	SPECIFICATION	RESULT
HPLC	Q/TFFK95—2007	NLT ≥98.0%	Conforms
NMR		Conforms	Conforms
MS		Conforms	Conforms
Residual Solvent	Q/TFFK95—2007	NA	ND
Water	Q/TFFK95—2007	≤2%	Conforms
Appearance		White Powder	Conforms

STORAGE CONDITIONS

STORAGE Refer to the label

SHELF LIFE 2 Years

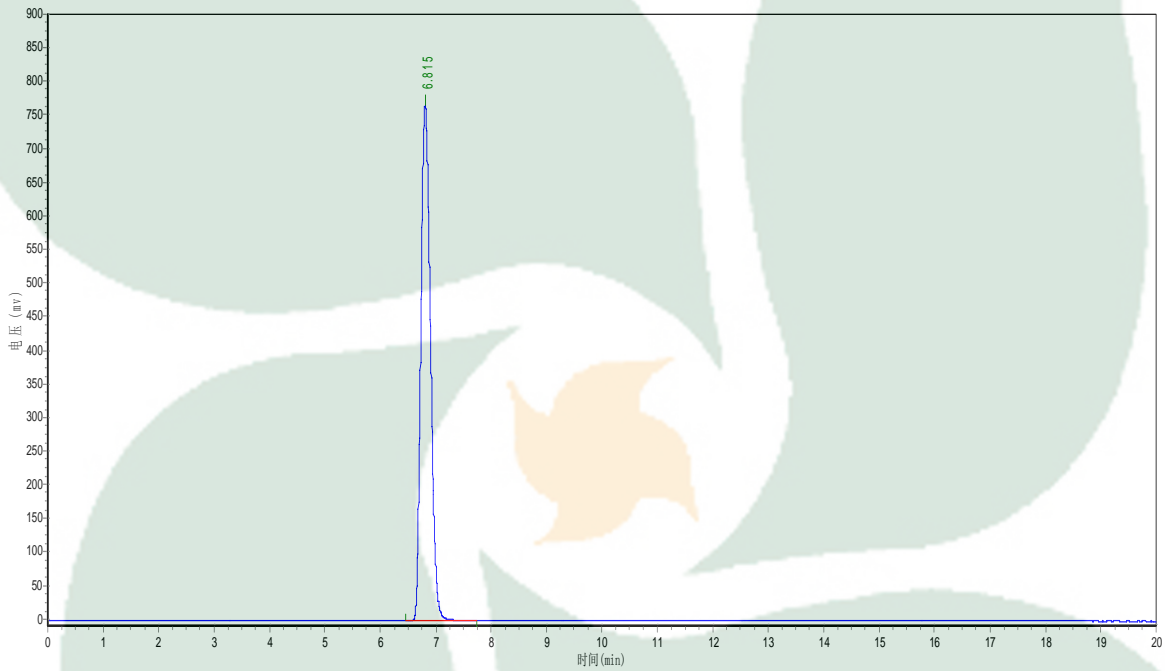
Analyst

Checker

Manager

Product Analysis Report

Product Name: Betaine Chrom-Column: C18
Lot Number: 17061422 Mobile Phase: 100%H2O
Detect Time: 2017-6-14 Detector: ELSD
Inject Vol: 20 μ L Tube Temp: 110.0 $^{\circ}$ C
Flow: 0.5ml/min Gas Flow: 2.5 L/min
Analyst: zhanghong Impactor: Off



No.	Ret.Time min	Height mAU	Area mAU*min	Rel.Area %
1	6.815	76544.625	9213239.000	100.0000