



同田生物
TAUTO BIOTECH

地址：上海市张江高科技园区爱迪生路326号 邮编：201203

销售热线：400-820-3059

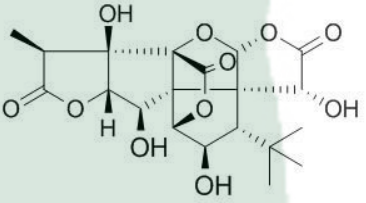
86-21-51320588-8008/8035/8026/8025

传真：86-21-51320502

QQ:800015916

URL: www.tautobiotech.com

Mail: sales2@tautobiotech.com export2@tautobiotech.com

PRODUCT ID	E-0009	Structure 
PRODUCT	Ginkgolide C /银杏内酯C	
STANDARD TYPE	Quantitative Reference Material (含量测定)	
LOT NUMBER	17101141	
ASSAY METHOD	HPLC,MS,NMR	
DATE OF SAMPLE	2017-10-11	
DATE OF REPORT	2017-10-11	

OTHER NAME

CHEMICAL FORMULA

C₂₀H₂₄O₁₁

MOLECULAR WEIGHT(MW)

440.39796

CAS NUMBER

15291-76-6

CHEMICAL FAMILY

Diterpenoids 二萜类

FROM

银杏科银杏叶提取物Ginkgo biloba Leaf P.E.

ANALYTICAL RESULT

TEST	METHOD	SPECIFICATION	RESULT
HPLC	Q/TFFK26—2004	NLT ≥98.0%	Conforms
NMR		Conforms	Conforms
MS		Conforms	Conforms
Residual Solvent	Q/TFFK26—2004	NA	ND
Water	Q/TFFK26—2004	≤2%	Conforms
Appearance		White Powder	Conforms

STORAGE CONDITIONS

STORAGE

Refer to the label

SHELF LIFE

2 Years

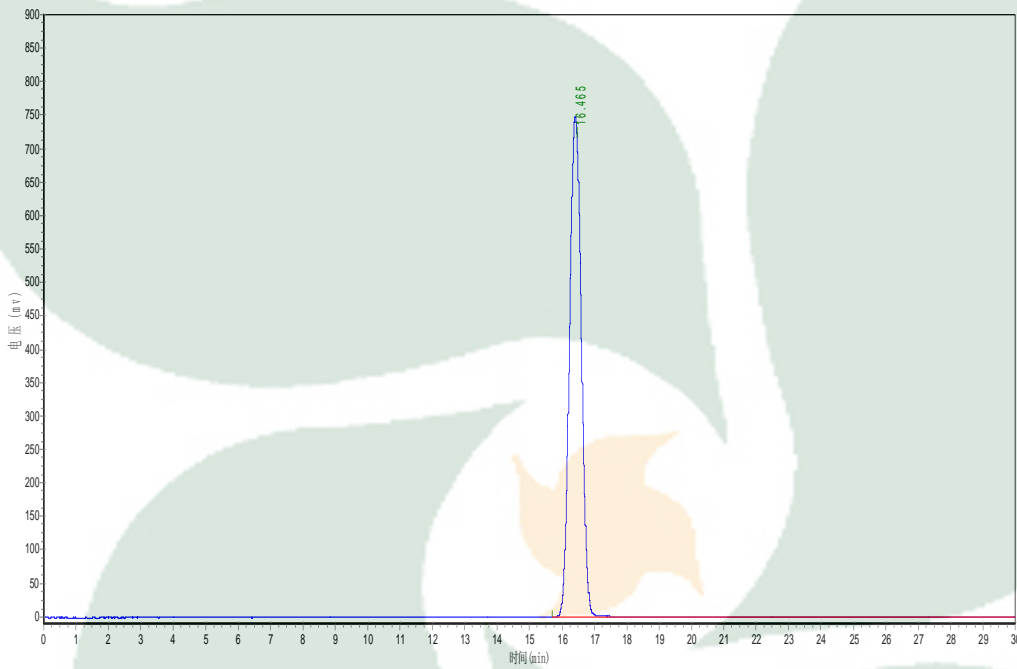
Analyst

Checker

Manager

Product Analysis Report

Product Name: Ginkgolide C Chrom-Column: C18
Lot Number: 17101141 Mobile Phase: MeOH:H2O=30:70
Detect Time: 2017-10-11 Detector: ELSD
Inject Vol: 20.0 μ L Tube Temp: 105 $^{\circ}$ C
Flow: 1.0ml/min Gas Flow: 2.5 L/min
Analyst: zhanghong Impactor: Off



No.	Ret.Time min	Height mAU	Area mAU*min	Rel.Area %
1	16.465	739272.938	18985658.000	100.0000