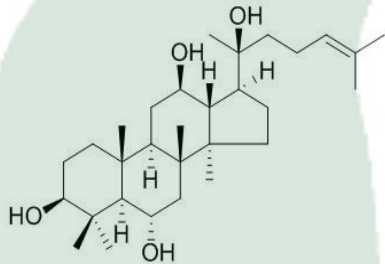


<b>PRODUCT ID</b>	E-0305	<b>Structure</b> 
<b>PRODUCT</b>	Protopanaxatriol /原人参三醇	
<b>STANDARD TYPE</b>	Quantitative Reference Standard/含量测定	
<b>LOT NUMBER</b>	17090441	
<b>ASSAY METHOD</b>	HPLC,NMR	
<b>DATE OF SAMPLE</b>	2017-09-04	
<b>DATE OF REPORT</b>	2017-09-04	

<b>OTHER NAME</b>	PPT; Protopanaxatriol
<b>CHEMICAL FORMULA</b>	C <sub>30</sub> H <sub>52</sub> O <sub>4</sub>
<b>MOLECULAR WEIGHT(MV)</b>	476.73
<b>CAS NUMBER</b>	34080-08-5
<b>CHEMICAL FAMILY</b>	Triterpenes 三萜类
<b>FROM</b>	五加科植物人参Panax ginseng C. A. Mey.的干燥根

**ANALYTICAL RESULT**

TEST	METHOD	SPECIFICATION	RESULT
HPLC	Q/TFFK544—2007	NLT ≥98.0%	Conforms
NMR		Conforms	Conforms
MS		Conforms	Conforms
Residual Solvent	Q/TFFK544—2007	NA	ND
Water	Q/TFFK544—2007	≤2%	Conforms
Appearance		White Crystal	Conforms

**STORAGE CONDITIONS**

STORAGE	Refer to the label
SHELF LIFE	2 Years

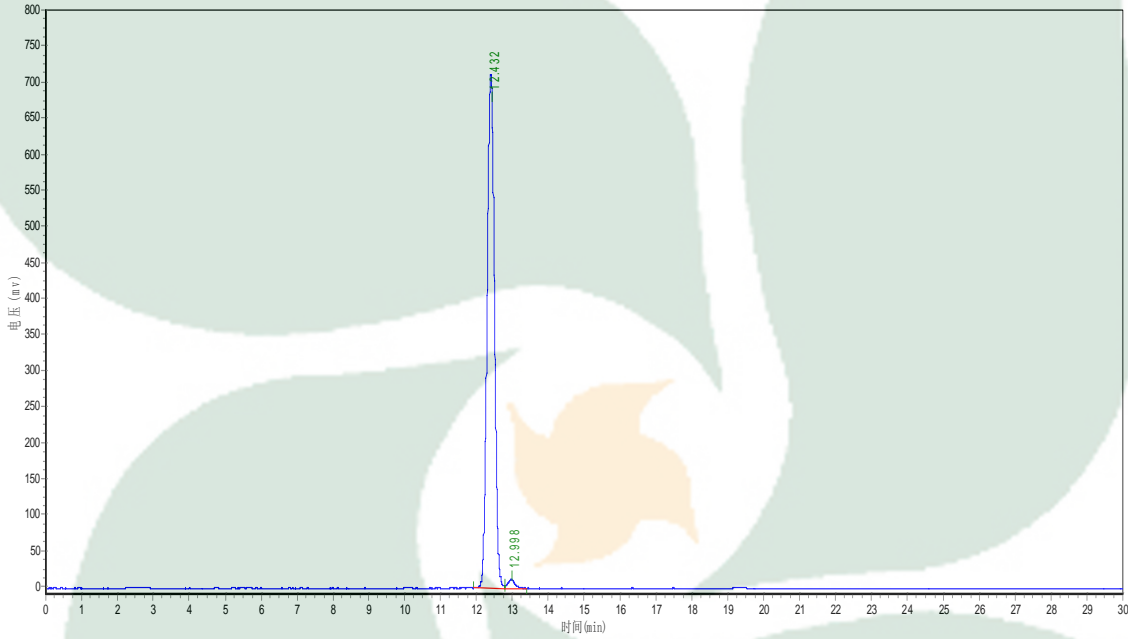
Analyst

Checker

Manager

# Product Analysis Report

**Product Name:** Protopanaxatriol      **Chrom-Column:** Arcus C18  
**Lot Number:** 17090441      **Mobile Phase:** ACN:H2O(55:45)  
**Detect Time:** 2017-9-4      **Detector:** ELSD  
**Inject Vol:** 20 $\mu$ L      **Tube Temp:** 105 $^{\circ}$ C  
**Flow:** 1.0ml/min      **Gas Flow:** 2.5L/min  
**Analyst:** zhanghong      **Impactor:** Off



No.	Ret.Time min	Height mAU	Area mAU*min	Rel.Area %
1	12.432	699185.313	10112410.000	98.2719
2	12.998	12154.138	177824.516	1.7281